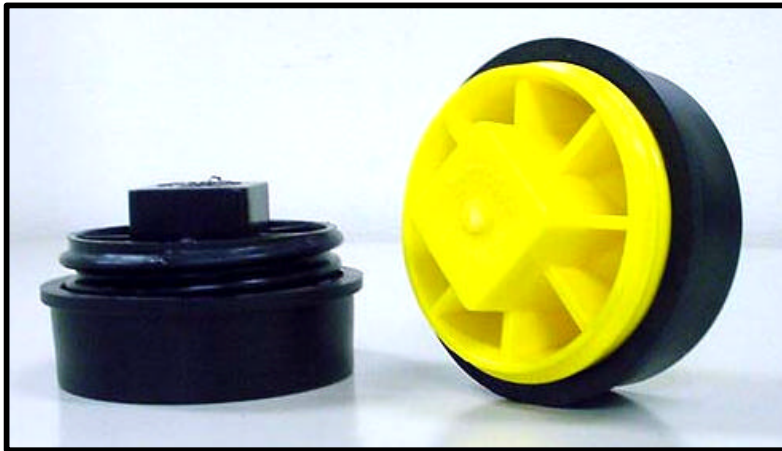


T-CONE PLUGS

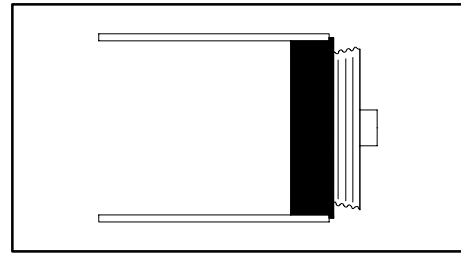


The T-Cone® Plug is the industry leader in reusable duct plugs. Containing no metal parts, the T-Cone provides a reliable seal against infiltration of debris, water or sewer gases. In blowout tests, the T-Cone Plug has also been able to withstand 20 feet of head pressure.

The T-Cone's two-piece, threaded design, consisting of an expandable sealing gasket with a tapered polyolefin-mating plug, provides for easy installation and removal. The T-Cone Plug is available in sizes ranging from 1" to 8" in diameter. Special sizes and configurations, including square gaskets are also available.

T-Cone Plugs are also available with rope tie loops for tying off pull strings or ropes.

ROUND T- CONE® PLUG FOR CONDUIT BARREL



NOM			Rope Tie	Conduit I.D.	Pieces Per	Weight Per
Size	Conduit Type	Part No.	Part No.	I.D.	Carton	Carton
1	SCH 40	ST-102	ST-102T	1.050	50	3
	DB-120	ST-103	ST-103T	1.195	50	3
	SCH 40 SOCKET	ST-106	ST-106T	1.315	50	3
1-1/8	1-1/8" I.D. SOCKET	ST-104	ST-104T	1.125	50	3
1-1/4	1-1/4" I.D. DUCT	ST-105	ST-105T	1.250	50	3
	SCH 40	ST-125	ST-125T	1.380	50	3
	DB60 / EB20	DB-120	DB-120T	1.540	50	4
1-1/2	1.49" SOCKET	ST-149	ST-149T	1.490	50	4
	SCH 40	ST-152	ST-152T	1.610	50	4
	DB60 / EB20	EB-152	EB-152T	1.780	50	5
2	SCH 80	ST-201	ST-201T	1.939	50	6
	SCH 40	ST-202	ST-202T	2.067	50	6
	GTE (0.090" T)	ST-203	ST-203T	2.195	50	7
	DB60 / EB20	EB-220	EB-220T	2.255	50	8
3	SCH 40	ST-302	ST-302T	3.066	50	12
	EB20	EB-320	EB-320T	3.378	50	17
	DB60	DB-360	DB-360T	3.316	50	16
3-1/2	TEL DUCT	ST-352	ST-352T	3.500	50	20
4	-----	ST-370	ST-370T	3.700	50	23
	SDR 13.5	ST-375	ST-375T	3.750	50	22
	4" SCH 80	ST-401	ST-401T	3.900	50	24
	SCH 40 & C DUCT	ST-402	ST-402T	4.026	50	22
	4" SDR 26 IPS	ST-403	ST-403T	4.125	50	23
	4" DB120	ST-419	ST-419T	4.190	50	--
	EB20	EB-420	EB-420T	4.336	50	28
	DB60 / GT80-DB	ST-425	ST-425T	4.258	50	27
5	5" SDR 13.5 (SCH 80)	ST-475	ST-475T	4.750	50	38
	SCH 40	ST-502	ST-502T	5.047	50	33
	-----	ST-542	ST-542T	5.420	50	40
	EB20	EB-520	EB-520T	5.357	50	38
	DB60	DB-560	DB-560T	5.260	50	38
6	HDPE SMOOTH-COR	ST-601	ST-601T	5.915	36	35
	SCH 40	ST-602	ST-602T	6.065	36	38
	6" SCH 80	ST-604	ST-604T	5.760	36	32
	-----	ST-695	ST-695T	6.963	20	36
	EB20	EB-620	EB-620T	6.375	36	44
	DB60	DB-660	DB-660T	6.261	36	41
7	-----	ST-706	ST-706T	7.060	36	66
8	SCH 40	ST-802	ST-802T	8.000	20	45

ROUND T-CONE® PLUG WITHOUT FLANGE FOR CONDUIT HUBS



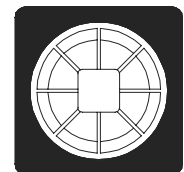
NOM			Rope Tie	Conduit I.D.	Pieces Per	Weight Per
Size	Conduit Type	Part No.	Part No.	I.D.	Carton	Carton
1-1/4	IPS HUB	ST-166	ST-166T	1.680	50	4
2	IPS HUB	ST-237	ST-237T	2.375	50	9
3	IPS HUB	ST-300	ST-300T	3.500	50	20
3-1/2	IPS HUB	ST-350	ST-350T	4.000	50	21
4	TEL DUCT HUB	ST-435	ST-435T	4.350	50	28
4	IPS HUB	ST-450	ST-450T	4.500	50	30
5	IPS HUB	ST-560	ST-560T	5.563	50	36
6	IPS HUB	ST-662	ST-662T	6.625	36	49

ROUND T-CONE® PLUG WITH FLANGE FOR CONDUIT HUB



NOM			Rope Tie	Conduit I.D.	Pieces Per	Weight Per
Size	Conduit Type	Part No.	Part No.	I.D.	Carton	Carton
3	3" IPS PLASTIC HUB	ST-352	ST-352T	3.500	50	20
4	4" IPS PLASTIC HUB	SF-450	SF-450T	4.500	50	35
5	5" IPS PLASTIC HUB	SF-560	SF-560T	5.563	50	36
6	6" IPS PLASTIC HUB	SF-662	SF-662T	6.625	36	53

SQUARE T-CONE® PLUG WITHOUT FLANGE FOR SQUARE DUCT



NOM			Rope Tie	Conduit I.D.	Pieces Per	Weight Per
Size	Conduit Type	Part No.	Part No.	I.D.	Carton	Carton
2-1/2	SQUARE DUCT	SQ-250	SQ-250T	2.500	50	11
3-1/4	SQUARE DUCT	SQ-325	SQ-325T	3.250	50	21
3-1/2	SQUARE DUCT	SQ-350	SQ-350T	3.500	50	25
4	SQUARE DUCT	SQ-400	SQ-400T	3.700	50	31
4-1/4	SQUARE DUCT	SQ-425	SQ-425T	4.250	50	35

MULTI-CAP®



Simple installation is the key to these adaptable push-on style caps. The Multi-Cap® centers the cable in the duct and provides a positive seal between the conduit and the cable.

The step design allows for easy, identifiable cut locations for various size cables – .325” through 1” diameter. The flexible PVC material provides a weather-tight seal with good chemical resistance and weatherproof properties. The Multi-Cap® is currently available in the following sizes:

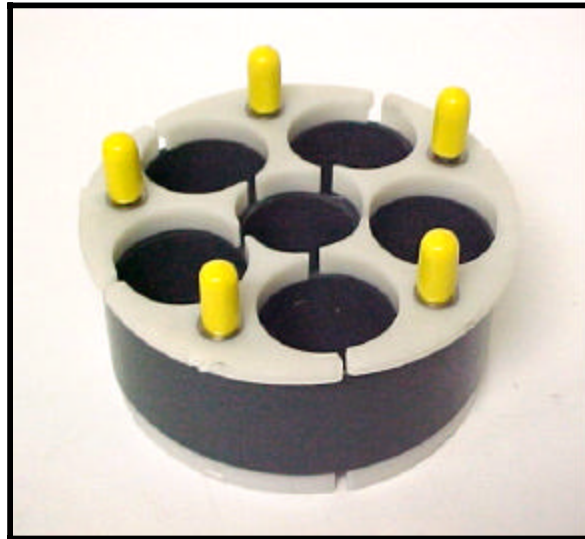
Nominal Size	Duct OD	Part No.	Nominal Size	Duct OD	Part No.
3/4”	1.050	CA – 075	2”	2.375	CA – 237
1”	1.315	CA – 100	2-1/2”	2.875	CA – 287
1-1/4”	1.660	CA – 125	2-1/2”	2.875	CA – 287 – 3
1-1/2”	1.900	CA – 150	3”	3.500	CA – 350
2”	2.375	CA – 200	3”	3.500	CA – 350 – 3
2”	2.375	CA – 200 – 3			

MULTI-CAP® DETAIL

NOMINAL Size	DUCT O.D.	PART Number	NO. OF Fingers	NO. Levels	I.D. OPENINGS Details By Levels
3/4"	1.050	CA-075	1	1	.500"
1"	1.315	CA-100	1	1	.500"
1-1/4"	1.660	CA-125	1	2	.750" - .500"
1-1/2"	1.900	CA-150	1	2	1.000" - .500"
2"	2.375	CA-200	1	2	1.000" - .500"
2"	2.375	CA-200-3	3	3	(2) @ .525" - (1) @ .475"
2"	2.375	CA-237	0	0	N/A - FLAT
2 -1/2"	2.875	CA-287	1	4	1.300" - 1.050" - .750" - .450"
2 -1/2"	2.875	CA-287-3	3	3	(2) @ .800" - .600" - .350" (1) @ .625" - .475" - .325"
3"	3.500	CA-350	1	4	1.300" - 1.050" - .750" - .450"
3"	3.500	CA-350-3	3	3	(2) @ .800" - .600" - .350" (1) @ .625" - .475" - .325"



MULTIPLEX DUCT-LOC PLUGS



ETCO's Multiplex Duct-Loc Plug is a split, compression plug designed to organize and seal around existing cable or innerduct inside a round opening. An elastomeric gasket is compressed between squeeze plates made from high impact plastic or stainless steel plates using stainless steel hardware.

The Multiplex Duct-Loc design enables quick installation and easy retrofitting in vaults, manholes and cabinets. ETCO is able to supply customized configurations and sizes upon request.

PART NO.	DESCRIPTION
SZ-395-3166	Multiplex, 4" 3 way 1.660"
SZ-395-4131	Multiplex, 4" 4 way 1.315"
SZ-497-4166	Multiplex, 5" 4 way 1.660"
SZ-595-5190-1166	Multiplex, 6" 5 way 1.900" & 1 way 1.660"