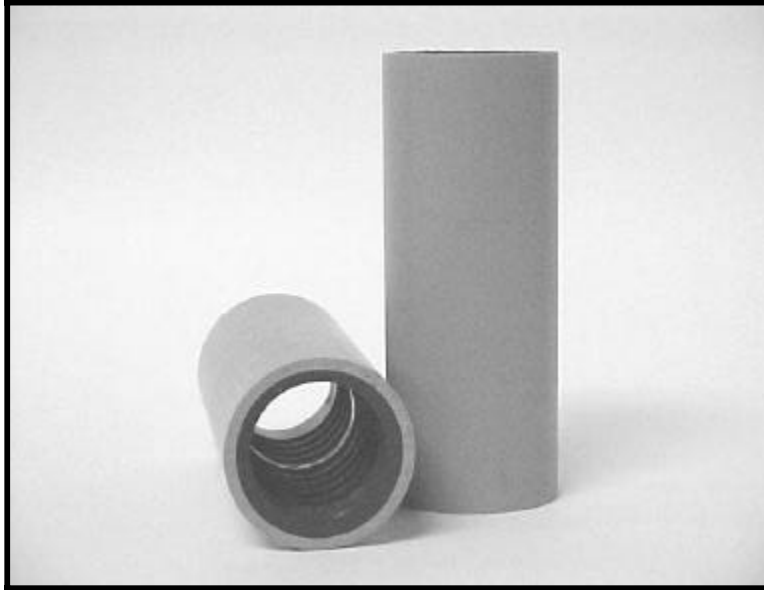


E-LOC® COUPLING



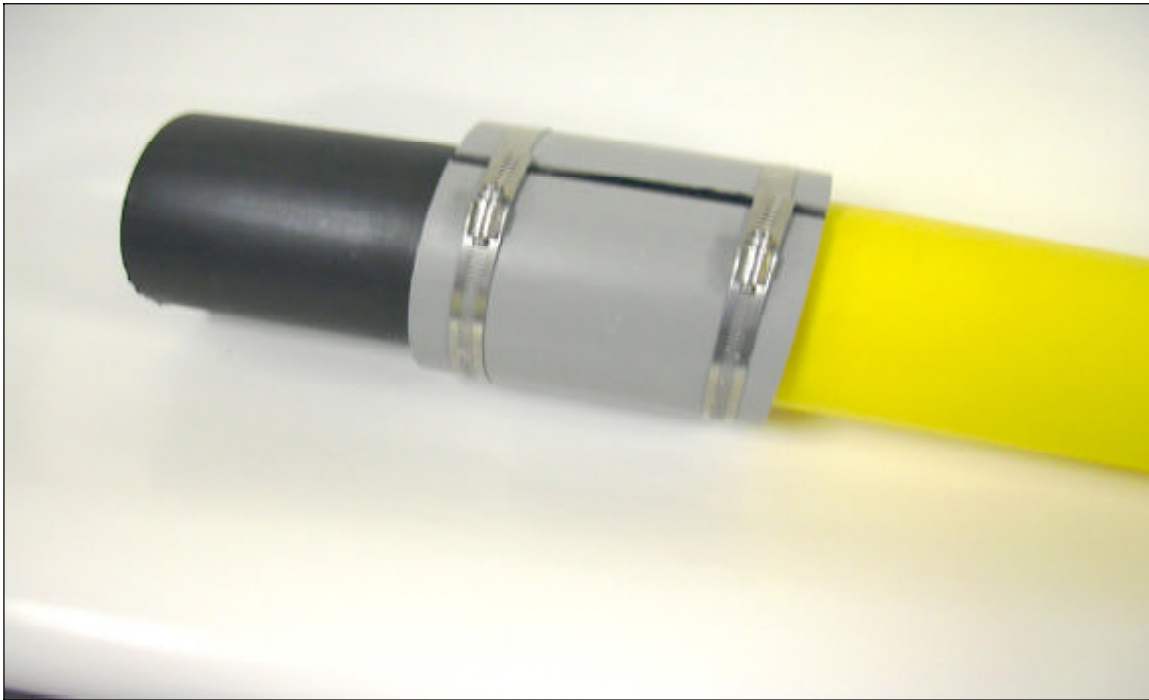
The E-Loc® Coupling is a compression coupling used to provide a watertight / airtight connection in buried or restrained applications. The ability to join dissimilar materials, such as, PVC, HDPE, fiberglass, or metal makes the E-Loc® a versatile coupling for the telephone, electrical, and cable industries. Patented.

E-Loc® Couplings are available to fit conduit sizes from ½” through 8”, including several special diameters. Watertight to 200 psi restrained on smooth wall, ribbed, and corrugated duct. Custom lengths and transitions for different diameters are also available.

E-LOC® COUPLING PARTS LIST

NOM. SIZE (IN.)	PART NO.	STANDARD	COUPLING		PCS. PER CTN	WT CTN
		DUCT SIZE (IN.)	BODY O.D. (IN.)	(IN.)		
1/2	EL-084	0.840" 1/2" IPS & SCH 40	1.400	6	50	20
	EL-086	0.860" 1/2" DROP	1.400	6	50	20
	EL-086R	0.860" 1/2" DROP 50A	1.400	6	50	20
5/8	EL-062	0.625" 13MM	1.315	6	50	16
3/4	EL-105	1.050" 3/4" IPS	1.660	6	50	19
	EL-105R	1.050" 3/4" IPS 50A	1.660	6	50	19
1	EL-123	1.231" OD DUCT	2.375	60	50	48
	EL-131	1.315" 1" IPS & SCH 40	2.375	6	50	46
	EL-131R	1.315" RIB	2.375	6	50	46
	EL-135	1.350" OD DUCT	2.375	6	50	45
	EL-137	1.375" OD DUCT	2.375	6	50	47
1-1/8	EL-142	1.420" OD DUCT	2.375	6	50	44
	EL-142R	1.420" OD DUCT RIB	2.375	6	50	44
1-1/4	EL-150	1.500" OD DUCT	2.375	6	50	39
	EL-150R	1.500" OD 1-1/4" RIB	2.375	6	50	39
	EL-154	1.540" PNA CORR	2.375	6	50	38
	EL-154R	1.540" PNA CORR	2.375	6	50	38
	EL-157	1.575" OD DUCT	2.375	6	50	39
	EL-157C	1.570" CORR 1-1/4	2.375	6	50	39
	EL-157R	1.575" OD DUCT RIB	2.375	6	50	39
	EL-160	1.600" OD DUCT	2.375	6	50	36
	EL-166	1.660" 1-1/4" IPS	2.375	6	50	34
	EL-166R	1.660" 1-1/4" RIB	2.375	6	50	34
	EL-175	1.750" OD DUCT	2.375	6	50	30
	EL-178	1.780" OD DUCT	2.875	6	50	30
	EL-178R	1.780" OD DUCT RIB	2.875	6	50	30
	1-1/2	EL-183	1.830" OD DUCT	2.875	6	50
EL-183R		1.830" OD DUCT RIB	2.875	6	50	42
EL-190		1.900" 1-1/2" IPS	2.875	6	25	28
EL-190-12		1.900" OD DUCT X 12"	2.875	12	24	55
2	EL-2197	2.197" OD DUCT (2"EMT)	3.500	6	25	43
	EL-232C	2.325" CORR (2" PNA)	3.500	6	25	42
	EL-235	2.350" OD DUCT	3.500	6	25	41
	EL-237	2.375" 2" IPS	3.500	6	25	40
	EL-237-8	2.375" OD DUCT X 8" LG	3.500	8	20	45
	EL-237-12	2.375" OD DUCT X 12" LG	3.500	12	15	49
	EL-237R	2.375" 2" IPS RIBBED	3.500	6	25	40
	EL-243	2.430" 2" SIDR 11.5	3.500	6	25	40
2-1/2	EL-287	2.875" 2-1/2" IPS	4.000	6	25	47
3	EL-350	3.500" 3" IPS	4.500	6	25	48
	EL-350-12	3.500" OD DUCT X 12" LG	4.500	12	16	63
	ELR-350	3.500" REPAIR SLEEVE	4.500	6	25	52
	4	EL-400	4.500" 4" IPS	5.563	6	25
EL-400-5		4.500" OD DUCT X 3" LG	5.563	3	25	34
EL-400-8		4.500" OD DUCT X 8" LG	5.563	8	10	34
EL-400-12		4.500" OD DUCT X 12" LG	5.563	12	12	64
EL-400-14		4.500" OD DUCT X 14" LG	5.563	14	10	50
ELR-400		4.500" REPAIR SLEEVE	5.563	6	25	64
ELR-400-8		4.500" REPAIR SLEEVE X 8"	5.563	8	10	37
EL-435		4.350" 4" C DUCT	5.563	6	25	64
EL-471		4.710" OD DUCT	5.563	6	25	54
EL-471-12		4.710" OD DUCT X 12" LG	5.563	12	12	64
EL-476		4.760" OD DUCT	5.563	6	25	59
EL-476-8		4.760" OD DUCT X 8" LG	5.563	8	10	29
EL-476-14	4.760" OD DUCT X 14" LG	5.563	14	10	50	
5	EL-500	5.563" OD DUCT	6.625	6	16	49
	EL-500-8	5.563" OD DUCT X 8" LG	6.625	8	10	41
	EL-500-12	5.563" OD DUCT X 12" LG	6.625	12	5	34
6	EL-600	6.625" OD DUCT 6" IPS	7.700	6	12	43
	EL-600-8	6.625" OD DUCT X 8" LG	7.700	8	6	30
	EL-600-12	6.625" OD DUCT X 12" LG	7.700	12	6	40
	EL-600-12RND	6" SDR13.5 - SCH40X12	7.700	12	6	40
	ELR-600	6.625" REPAIR SLEEVE	7.700	6	12	40
8	ELR-600-8	6.625" OD DUCT X 8" LG	7.700	8	8	28
	EL-800	8.625" OD DUCT (8" IPS)	9.775	6	6	27

ETCO Split E-LOC®



The Split E-LOC® is a once piece split coupling, designed to facilitate fast and easy repairing of damaged conduit in tight or congested conditions.

It can be used to repair vacant or occupied ducts. Its design allows for overlay compression that grips the damaged conduit and seals watertight and airtight without the use of sealing adhesives!

Split E-LOC's have the ability to join dissimilar materials, such as PVC, HDPE, fiberglass or metal, which makes it a versatile coupling for the telephone, electrical, and cable industry.

Perfect for all restrained (buried) and unrestrained repair applications where pulling tensions do not exceed 200 lbs.

Available in sizes 1" thru 6". Customized lengths up to 36" are available upon request.

E-LOC® TRANSITION COUPLING



The E-Loc Transition Coupling is a compression coupling used to provide a watertight / airtight connection for different diameter duct in buried or restrained applications.

The E-Loc Transition Coupling has all the great features as the standard E-Loc Coupling including the ability to join dissimilar materials such as PVC, HDPE, fiberglass or metal.

The E-Loc Transition Coupling is watertight to 200 psi when restrained on smooth wall, ribbed and corrugated duct. Custom lengths and transitions are also available.

E-LOC® TRANSITION COUPLING PARTS LIST

OLD PART #	NEW PART #	NEW DESCRIPTION
ELA-08684	ELA-086084	CPLG, E-LOC TRANS .086" X 0.84"
ELA-13713	ELA-135131	CPLG, E-LOC TRANS 1.375" X 1.315"
ELA-15131	ELA-154131	CPLG, E-LOC TRANS 1.540" X 1.315"
ELA-1514	ELA-154142	CPLG, E-LOC TRANS 1.540" X 1.425"
ELA-16131	ELA-166131	CPLG, E-LOC TRANS 1.660" X 1.315"
ELA-16137	ELA-166137	CPLG, E-LOC TRANS 1.660" X 1.375"
ELA-16140	ELA-166140	CPLG, E-LOC TRANS 1.660" X 1.400"
ELA-1615	ELA-166154	CPLG, E-LOC TRANS 1.660" X 1.540"
ELA-1616	ELA-166158	CPLG, E-LOC TRANS 1.660" X 1.580"
ELA-166105	ELA-166105	CPLG, E-LOC TRANS 1.660" X 1.050"
ELA-166160	ELA-166160	CPLG, E-LOC TRANS 1.660" X 1.600"
ELA-177154	ELA-177154	CPLG, E-LOC TRANS 1.770" X 1.540"
ELA-190160R	ELA-190160R	CPLG, E-LOC TRANS 1.900" X 1.60 RIB
ELA-1913	ELA-190131	CPLG, E-LOC TRANS 1.900" 1.315"
ELA-1915	ELA-190157	CPLG, E-LOC TRANS 1.900" X 1.575"
ELA-1915R	ELA-190157R	CPLG, E-LOC TRANS 1.900" X 1.57 RIB
ELA-1916	ELA-190166	CPLG, E-LOC TRANS 1.900" X 1.660"
ELA-19160	ELA-190160	CPLG, E-LOC TRANS 1.900" X 1.600"
ELA-2313	ELA-237131	CPLG, E-LOC TRANS 2.375" X 1.315"
ELA-2315	ELA-237154	CPLG, E-LOC TRANS 2.375" X 1.540"
ELA-2316	ELA-237166	CPLG, E-LOC TRANS 2.375" X 1.660"
ELA-2319	ELA-237190	CPLG, E-LOC TRANS 2.375" X 1.900"
ELA-235183	ELA-235183	CPLG, E-LOC TRANS 2.350" X 1.830"
ELA-2823	ELA-287237	CPLG, E-LOC TRANS 2.875" X 2.375"
ELA-3523	ELA-350237	CPLG, E-LOC TRANS 3.500" X 2.375"
ELA-3528	ELA-350287	CPLG, E-LOC TRANS 3.500" X 2.875"
ELA-4335	ELA-435350	CPLG, E-LOC TRANS 4.350" X 3.500"
ELA-4523	ELA-450237	CPLG, E-LOC TRANS 4.500" X 2.375"
ELA-4528	ELA-450287	CPLG, E-LOC TRANS 4.500" X 2.875"
ELA-4535	ELA-450350	CPLG, E-LOC TRANS 4.500" X 3.500"
ELA-4540	ELA-450400	CPLG, E-LOC TRANS 4.500" X 4.000"
ELA-4542	ELA-450421	CPLG, E-LOC TRANS 4.500" X 4.215"
ELA-4543	ELA-450435	CPLG, E-LOC TRANS 4.500" X 4.350"
ELA-4543-18	ELA-450435-18	CPLG, E-LOC TRANS 4.500" X 4.35" X 18
ELA-471450	ELA-471450	CPLG, E-LOC TRANS 4.710" X 4.500"
ELA-4743	ELA-476435	CPLG, E-LOC TRANS 4.760" X 4.350"
ELA-4745	ELA-476450	CPLG, E-LOC TRANS 4.760" X 4.500"
ELA-4745-14	ELA-476450-14	CPLG, E-LOC TRANS 4.760" X 4.50" X 14
ELA-475400	ELA-476400	CPLG, E-LOC TRANS 4.760" X 4.000"
ELA-5645	ELA-556450	CPLG, E-LOC TRANS 5.563" X 4.500"
ELA-6645	ELA-662450	CPLG, E-LOC TRANS 6.625" X 4.500"
ELA-6656	ELA-662556	CPLG, E-LOC TRANS 6.625" X 5.563"

INSTALLATION INSTRUCTIONS FOR E-LOC® COUPLINGS / E-LOC® TRANSITION COUPLINGS

1. Check and make sure size of coupling is same as conduit being installed. E-Loc® Couplings / Transition Couplings are based on standard O.D. sizes.
2. Wipe ends of conduit clean. Make sure it is clean of burrs, dirt, or foreign material.
3. To insure the coupling is fully inserted, place a reference point mark on both ends of the conduit a distance from the end equal to $\frac{1}{2}$ the overall length of the coupling. For example, if using a 6" long coupling, place a mark 3" from each end of the conduit; on 8" long couplings, place a mark 4" from each end and so forth depending upon length of the coupling. When properly installed, the mark should be visible against each end of the coupling.
4. The ends of the conduit can be lubricated with water or water with a small amount of liquid dishwashing soap. ***(Do not use motor oil or thread lubricants commonly used for metal pipe threads. This includes W-D 40® "type" lubricant.)***
5. On smaller diameter conduit, position coupling on the conduit, place a board across the end and hit with a small mallet or hammer. For easier installation of the E-Loc® Transition Couplings, ETCO suggests installing the larger end of the conduit first – if possible. (Do not hit the coupling directly with the hammer.) On larger diameter conduit, clean and lubricate ends per steps #1 thru #4. Use a bar and a block to push the joint. If a hammer and block of wood are used, make sure wood is in contact with both sides of the coupling and hit block center. (Do not hit the coupling directly with the hammer.) Check to make sure conduit is all the way "home" using the reference point mark.
6. When joining conduit off a reel, install the E-Loc® Coupling / Transition Coupling on conduit end coming from reel using steps #1 thru #5 above. After the coupling is on properly, push the installed coupling onto the clean second conduit end (lubricate if needed). If necessary, place a small board on the edge of coupling toward the reel and drive coupling on to second conduit. (Do not hit coupling directly with the hammer.)

DOUBLE E-LOC® COUPLING



The ETCO Double E-Loc® is a locking compression coupling used to join smooth, ribbed, corrugated or Figure 8 High Density Polyethylene (HDPE) conduit.

The locking, pressure tight design makes the Double E-Loc® an ideal coupling for pneumatic cable placing applications when air and watertight integrity of the system is imperative.

Unmatched pressure ratings, pull out resistance, no metal parts, and no special tools makes the ETCO Double E-Loc® the preferred coupling.

DOUBLE E-LOC® COUPLING PARTS LIST

		COUPLING		
		LENGTH	PIECES	WT.
	DUCT SIZE	MADE - UP	PER	PER
PART NO.	(IN.)	(IN.)	CTN.	CTN.
DEL-131	CPLG, DBL E-LOC 1.315" (1" IPS)	6.25	50	63
DEL-135	CPLG, DBL E-LOC 1.350"	6.25	50	63
DEL-142	CPLG, DBL E-LOC 1.42 DCT 1.46 RIB	6.25	50	61
DEL-150	CPLG, DBL E-LOC 1.500"	6.25	50	56
DEL-154	CPLG, DBL E-LOC 1.540" (1-1/4 RIB)	6.25	50	58
DEL-157	CPLG, DBL E-LOC 1.570" (40MM)	6.25	50	56
DEL-160	CPLG, DBL E-LOC 1.600"	6.25	50	56
DEL-166	CPLG, DBL E-LOC 1.660" (1-1/4 IPS)	6.25	50	48
DEL-166G	CPLG, DBL E-LOC 1.660" RIBBED	6.25	50	48
DEL-171	CPLG, DBL E-LOC 1.710 1-1/4 SIDR 9	6.25	50	54
DEL-178	CPLG, DBL E-LOC 1.830" RIBBED	8.25	25	47
DEL-183	CPLG, DBL E-LOC 1.830 1-1/2 SIDR9	8.25	25	46
DEL-190	CPLG, DBL E-LOC 1.900" (1-1/2 IPS)	8.25	25	32
DEL-237	CPLG, DBL E-LOC 2.375" (2" IPS)	8.50	25	51

T-LOC® Coupling



The T-Loc® compression coupling is designed to join various toneable HDPE innerduct, specifically for pneumatic cable placing when air and watertight integrity of the system is imperative.

The T-Loc® coupling will maintain pressures above 200 psi unrestrained. The coupling has a center-threaded body extension with 1" NPT threads and a terminating cap. Threaded 1" NPT pipe extensions can be added to allow for above ground conductor connections or terminations and for toning access.

T-Loc® Parts List

PART NO.	Size
TLC-131	1"
TLC-166	1-1/4"
TLC-190	1-1/2"
TLC-237	2"

EXTENSION PLUG

PART NO.

EXP-131	1" NPT X 3" LONG
---------	------------------

EASY-LOC EXTERNAL COUPLINGS



The Easy-Loc External Coupling is a machined right hand / left hand reverse threaded coupling used to join smooth, corrugated, or ribbed HDPE conduit. The Easy-Loc's streamlined design is ideal for applications where space is critical.

The unique thread design provides good pullout strength while reducing the number of revolutions necessary for installation. The Easy-Loc is not suitable when airtight or watertight connections are required. The Easy-Loc is available in aluminum for non-corrosive environments.

ITEM P/N	ITEM SIZE
AS 1.050 - 4	3/4"
AS 1.315 - 4	1"
AS 1.660 - 4	1 1/4"
AS 1.900 - 4	1 1/2"
AS 2.375 - 4	2"
AS 2.875 - 4	2 1/2"
AS 3.500 - 4	3"
AS 4.500 - 4	4"
AS 5.562 - 4	5"
AS 6.625 - 4	6"

JET-LOC BARBED COMPRESSION COUPLING

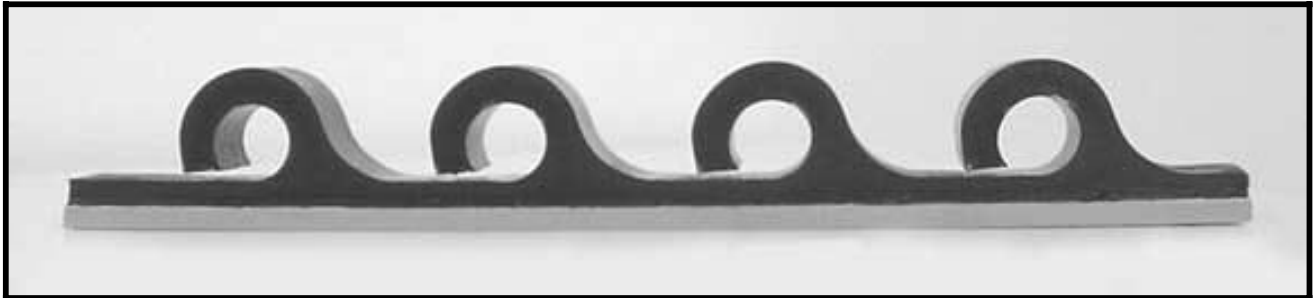


The Jet-Loc barbed compression coupling provides a pressure tight, streamlined design for blowing applications in HDPE conduit. The sharp, precision-cut internal barbs provide good pullout resistance with a pressure tight seal.

The Jet-Loc installs easily with a hydraulic coupling press and is available in aluminum (for non-corrosive environments) and high impact plastic.

ITEM P/N	ITEM SIZE
ALUMINUM BARBED	
AB 1.050 - 4	3/4"
AB 1.315 - 4	1"
AB 1.660 - 4	1 1/4"
AB 1.900 - 4	1 1/2"
AB 2.375 - 4	2"
PLASTIC BARBED	
PB 1.660	1 1/4"
PB 1.900	1 1/2"
PB 2.375	1

SOFT-TUFF CABLE RACKS



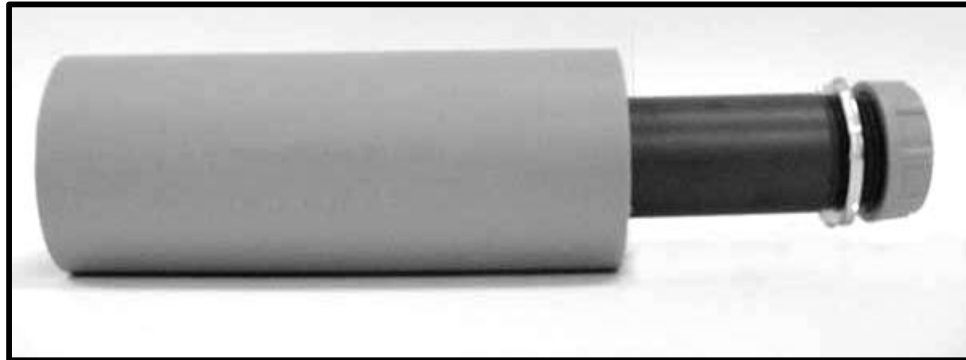
Soft-Tuff Cable Racks organize and support Fiber Optic cables and copper cables up to 1" diameter in hand-holes, manholes, vaults or any location that requires safe and quick cable arrangement. Product design allows for accidental pullouts without damaging the cable. The Soft-Tuff Cable Racks can be attached to existing cable racks with cable ties or attached to solid surfaces with self-tapping screws.

Soft-Tuff Cable Racks are available in the following standard un-drilled sizes: *

<u>ITEM PART NO.</u>	<u>DESCRIPTION</u>
CR – 11.5	4 Loop 11.5" Long
CR – 21	8 Loop 21" Long
CR – 29	12 Loop 29" Long

*Custom lengths and pre-drilled Soft-Tuff Cable Racks are available at additional pricing.

QUICK SEAL TERMINATORS



Quick Seal Terminators join fiber optic innerduct to assorted cabinets. Quick Seal Terminators incorporate the ETCO E-Loc® features to create a weather resistant seal that protects the innerduct and cable from kinks and cabinet termination against environmental intrusions. Hand installation; no tools required.

They are available in the following sizes:

NOM. PIPE SIZE	ITEM PART / NO.
-------------------------------	----------------------------

1/2"	ETA-084
3/4"	ETA-105
1"	ETA-131
1-1/4"	ETA-154
1-1/4"	ETA-166
1-1/2"	ETA-190
2"	ETA-237
2-1/2"	ETA-287