



Directional Drilling Swivels



SWIVELS & ACCESSORIES



U.S. Patent No. 5,607,248.

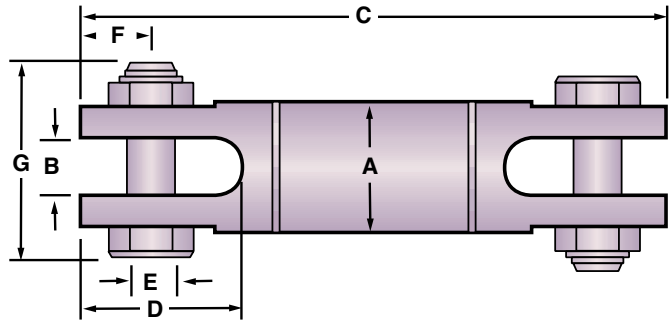


D.Drill® Directional Drilling Swivels

Designed specifically for directional drilling, the Condux 819 D.Drill Swivels prevent boring equipments' rotational torque from interfering with the product (cable or conduit) being pulled. The D.Drill Swivels are greasable and double sealed to keep contaminants out. Clevis pins with hex nuts allow for installation and removal from either side of the swivel. There is a 90 day warranty on the directional drill swivels.

CAUTION: To be used for directional drilling only.

CAUTION: Condux requires the use of a calcium based lubricant only. Other lubricants may have adverse reactions when exposed to bentonite products. Condux requires that the swivels be flushed with grease after each use to purge any contaminants that may have penetrated past the seals into the swivel while boring. See next page for calcium based lubricants.



Part Number	Working Load		A (in) (mm)	B (in) (mm)	C (in) (mm)	D (in) (mm)	E (in) (mm)	F (in) (mm)	G (in) (mm)
	Tension (lbs)	Compression (lbs)							
08190016	8,500	2,800	1 5/8	.63	6.85	1.59	.56	.78	2.36
08190020	10,000	3,300	2	.75	7.83	1.81	.63	.75	2.89
08190025	20,000	6,600	2 1/2	1.00	10.93	2.84	.88	1.25	3.67
08190030	30,000	10,000	3	1.31	12.75	3.56	1.13	1.37	4.50
08190040	45,000	15,000	4	1.63	15.25	4.00	1.25	1.84	5.58
08190045	60,000	20,000	4 5/8	1.75	17.48	4.62	1.50	2.13	6.31
08190060	90,000	30,000	6	2.00	18.27	4.50	1.75	2.18	6.59
08190080	120,000	40,000	8	2.25	21.71	5.25	2.00	2.50	8.25

Replacement Parts

D.Drill Swivel rebuild kits allow the swivel to be rebuilt by the user if bentonite gets past the seals and damages the bearings. Kit includes 4 bearings, 2 seals, a roll pin, a setscrew, a grease zerk and instructions. Individual replacement clevis pins and clevis pin locking nuts are also available.



Swivel Size	Rebuild Kit	Clevis Pin	Locking Nut	Rebuild Tool
1 5/8 (41 mm)	08190001	08190104	02250500	—
2 (51 mm)	08190002	08190114	02250600	—
2 1/2 (64 mm)	08190003	08190124	02250700	—
3 (76 mm)	08190004	08190134	02250800	—
4 (102 mm)	08190008	08190154	02263000	—
4 5/8 (117 mm)	08190005	08190144	02250900	—
6 (152 mm)	08190006	08190164	02251000	08190168
8 (203 mm)	08190009	08190167	02279000	08190188





Directional Drilling Grease

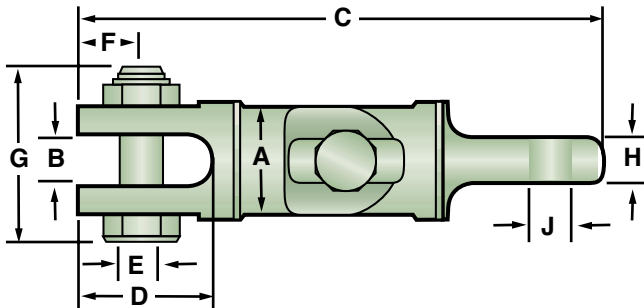
Specially formulated for use in a bentonite clay environment. This is an extreme pressure multiservice lubricant designed to give outstanding performance in directional drilling / boring applications. Manufactured from the highest quality petroleum oil and thickened with a unique calcium complex soap. This thickener resists breakdown caused by bentonite, which is common with lithium based lubricants. Packaged in cartridges to fit a standard grease gun. Standard package qty is 10 cartridges.



Part Number	Description
08190007	Directional Drilling Grease (1 Cartridge)

Universal Joints

Condux U-Joints are used to aid the pulling of conduit or other material in a directional drilling application. Used in conjunction with D.Drill® Swivels, U-Joints prevent side loading and binding that may occur at points in a directional bore. To ensure load rating and size match, U-Joints are available with the same specifications as Condux 819 D.Drill® Swivels.



Part Number	Working Load Tension		A		B		C		D		E		F		G		H		J	
	(lbs)	(N)	(in)	(mm)	(in)	(mm)	(in)	(mm)	(in)	(mm)	(in)	(mm)	(in)	(mm)	(in)	(mm)	(in)	(mm)	(in)	(mm)
08190316	8,500	37,808	1 7/8	41	.63	16	6.88	175	1.59	40	.56	14	.78	20	2.36	60	.61	15	.58	15
08190320	10,000	44,480	2	51	.75	19	7.97	202	1.81	46	.63	16	.75	19	2.89	73	.73	19	.76	19
08190325	20,000	88,960	2 1/2	64	1.00	25	11.13	283	2.84	72	.88	22	1.25	32	3.67	93	.98	25	.89	23
08190330	30,000	133,440	3	76	1.31	33	13.75	349	3.56	90	1.13	29	1.38	35	4.50	114	1.29	33	1.14	29
08190340	45,000	200,160	4	102	1.63	41	17.25	438	4.00	102	1.25	32	1.84	47	5.58	142	1.61	41	1.26	32
08190345	60,000	266,880	4 3/8	117	1.75	44	20.75	527	4.63	118	1.50	38	2.12	54	6.31	160	1.73	44	1.52	39

D.Drill Swivels & PE & PVC Pulling Eye Compatibility Chart

Swivel		PE & PVC Pulling Eye	
Part Number	Size in (mm)	Part Number	Size in (mm)
08190016	1 5/8 (41)	08220012 - 08220030	1 1/4 (32), 1 1/2 (38), 2 (51), 2 1/4 (57), 2 1/2 (63), 3 (76)
08190020	2 (51)	08220012 - 08220030	1 1/4 (32), 1 1/2 (38), 2 (51), 2 1/4 (57), 2 1/2 (63), 3 (76)
08190025	2 1/2 (64)	08220025 - 08220080	2 1/2 (63), 3 (76), 4 (102), 5 (127), 6 (152), 7 (178), 8 (203)
08190030	3 (76)	---	---
08190040	4 (102)	08220040 - 08220060	4 (102), 5 (127), 6 (152)
08190045	4 5/8 (117)	08220040 - 08220060, 08220021, 08220031	4 (102), 5 (127), 6 (152), 12 (305), 14 (356)
08190060	6 (152)	---	---
08190080	8 (203)	---	---



Directional Drilling Products

SWIVELS & ACCESSORIES



Break-Away D.Drill® Swivel
1 1/4"-1 3/8"

U.S. Patent No. 4,687,365.

Break-Away Swivels for Directional Drilling

Avoid overstressing cable or conduit being pulled in during directional drilling operations. The Condux Break-Away Swivels for directional drilling are designed exclusively to provide **both** the swivel and the break link for product pull-back. Eliminate the use of two or more components and shorten the gap between the reamer and pulling eye. No need to use "weak link" pipe sections or wire when using the Condux Break-Away Swivel.

Six different diameter swivels are available to accommodate various pulling needs. Break loads range from 1,900 lbs. (8,451 N) to 22,000 lbs. (97,856 N) and are designed to separate at ±10% of their rated break load. Order Replacement Pins as needed.

NOTE: D.Drill Swivels come with a 90 day limited warranty.

***WARNING:** These swivels to be used while Directional Drilling only— Severe personal injury could result if used with rope or steel winch lines in cable pulling applications.

1 1/4" Swivel (32 mm)

Part Number	Break Load	
	(lbs)	(N)
08019400*	1,900	8,451
08019500*	2,000	8,896
08019600*	2,500	11,120
08019700*	3,000	13,344
08076100*	3,400	15,123
08019800*	4,000	17,792

1 3/8" Swivel (35 mm)

Part Number	Break Load	
	(lbs)	(N)
08019900*	4,500	20,016
08021300*	5,000	22,240
08022100*	5,500	24,464
08024200*	6,000	26,688
08024400*	6,500	28,912

1 5/8" Swivel (41 mm)

Part Number	Break Load	
	(lbs)	(N)
08024500*	7,000	31,136
08025500*	7,500	33,360
08027900*	8,000	35,584
08028400*	8,500	37,808

2" Swivel (51 mm)

Part Number	Break Load	
	(lbs)	(N)
08029200*	9,000	40,032
08029400*	10,000	44,480

2 1/2" Swivel (64 mm)

Part Number	Break Load	
	(lbs)	(N)
08029600*	12,000	53,376
08029700*	14,000	62,272

3" Swivel (76 mm)

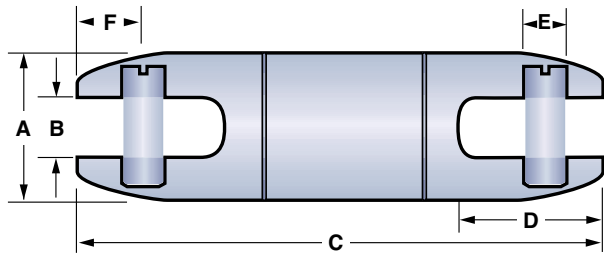
Part Number	Break Load	
	(lbs)	(N)
08075600*	18,500	82,288
08075800*	22,000	97,856



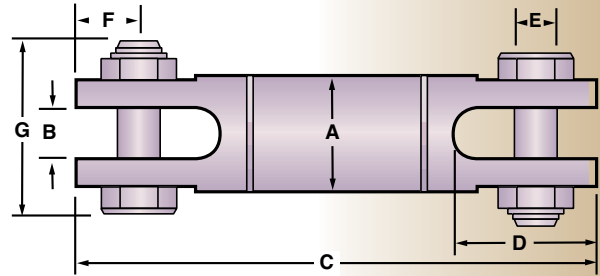
Break-Away D.Drill® Swivel
1 5/8"-3"

U.S. Patent No. 4,687,365.

U.S. Patent No. 5,607,248.

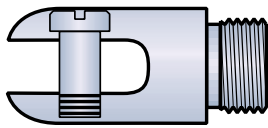


Use these dimensions when ordering the 1¼" (32 mm) and the 1½" (38 mm) swivels.



Use these dimensions when ordering the 1⅝" (41 mm), the 2" (51 mm), the 2½" (64 mm) and the 3" (76 mm) swivels.

A		B		C		D		E		F		G	
(in)	(mm)	(in)	(mm)	(in)	(mm)	(in)	(mm)	(in)	(mm)	(in)	(mm)	(in)	(mm)
1¼	32	.56	14	5.44	138	1.34	34	.37	9	.59	15	-	-
1½	35	.56	14	5.25	133	1.31	33	.44	11	.56	14	-	-
1⅝	41	.63	16	6.85	174	1.59	40	.56	14	.78	20	2.36	60
2	51	.75	19	7.83	199	1.81	46	.63	16	.75	19	2.89	73
2½	64	1.00	25	10.93	278	2.84	72	.88	22	1.25	32	3.67	93
3	76	1.31	33	12.75	324	3.56	90	1.13	29	1.37	36	4.50	114



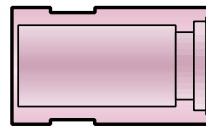
Externally Threaded Head



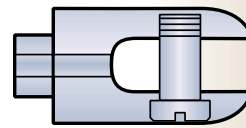
Break Pin



Bearings



Body



Internally Threaded Head

Replacement Pins For Break-Away Directional Drilling Swivels

Part Number	Break Load		Break Pin Color Code
	(lbs)	(N)	
08019405	1,900	8,451	Violet/Black
08019505	2,000	8,896	Slate/White
08019605	2,500	11,120	Violet/Green
08019705	3,000	13,344	Slate/Red
08076105	3,400	15,123	Blue/Yellow
08019805	4,000	17,792	Red/Yellow
08019905	4,500	20,016	Slate/Yellow
08021305	5,000	22,240	Orange/Blue
08022105	5,500	24,464	Brown/Green
08024205	6,000	26,688	Blue/Brown
08024405	6,500	28,912	Red/Blue
08024505	7,000	31,136	Orange
08025505	7,500	33,360	Blue
08027905	8,000	35,584	Yellow
08028405	8,500	37,808	Slate
08029205	9,000	40,032	Red
08029405	10,000	44,480	Green
08029605	12,000	53,376	White
08029705	14,000	62,272	Brown
08029720	18,500	82,288	Black
08075805	22,000	97,856	Yellow