



Ball Bearing Swivels

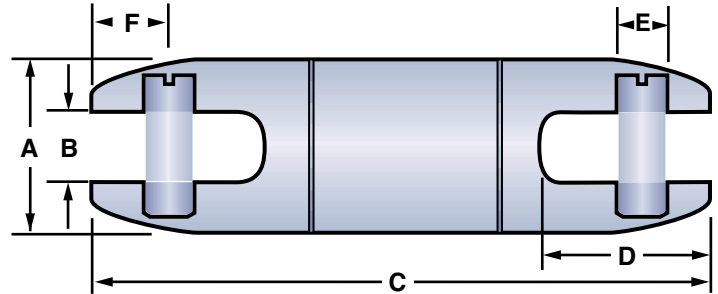


SWIVELS & ACCESSORIES



808 Champion Swivels

Designed specifically for underground and overhead cable pulling applications. Can handle all types of utility cables. Precision machined from high-strength steel.



CAUTION: To be used for cable stringing or pulling only.

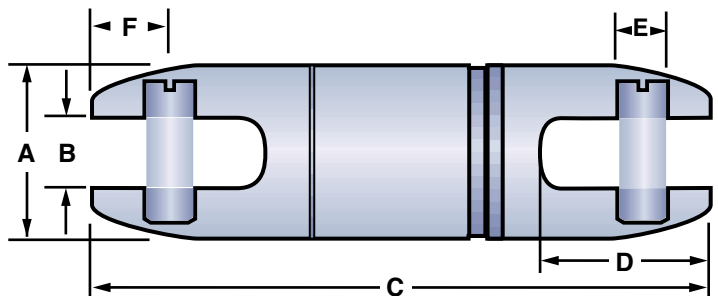
NOTE: Swivels are not designed to run around bullwheels.

Part Number	Working Load		A		B		C		D		E		F	
	(lbs.)	(N)	(in)	(mm)	(in)	(mm)	(in)	(mm)	(in)	(mm)	(in)	(mm)	(in)	(mm)
08017000	600	2,669	5/8	16	.28	7	3.56	90	.79	20	.25	6	.37	9
08016000	1,800	8,006	7/8	22	.38	10	4.51	115	1.06	27	.31	8	.53	13
08080912	4,000	17,792	1 1/4	32	.56	14	5.44	138	1.34	34	.37	9	.59	15
08080913	6,500	28,912	1 3/8	35	.56	14	5.25	133	1.31	33	.44	11	.56	14
08080916	8,500	37,808	1 1/2	41	.63	16	6.51	165	1.59	40	.56	14	.78	20
08080920	10,000	44,480	2	51	.75	19	6.99	178	1.78	45	.62	16	.72	18
08080925	20,000	88,960	2 1/2	64	1.00	25	10.23	260	2.80	71	.87	22	1.23	31
08080930	30,000	133,440	3	76	1.31	33	12.04	306	3.56	90	1.12	28	1.37	35



821 Champion Swivels

Designed to meet common dimensional specifications, the 821 Champion Swivels are designed for underground and overhead cable pulling applications and can handle all types of utility cable. Precision machined from high-strength steel.



CAUTION: To be used for cable stringing or pulling only.

NOTE: Swivels are not designed to run around bullwheels.

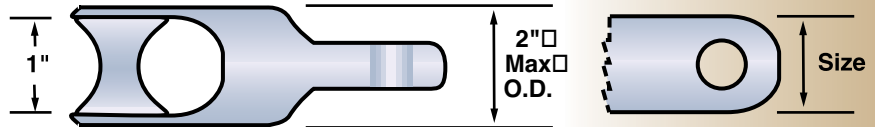
Part Number	Working Load		A		B		C		D		E		F	
	(lbs.)	(N)	(in)	(mm)	(in)	(mm)	(in)	(mm)	(in)	(mm)	(in)	(mm)	(in)	(mm)
08210007	1,800	8,006	7/8	22	.31	8	3.09	78	.84	21	.31	8	.38	10
08210012	4,000	17,792	1 1/4	32	.59	15	4.52	115	1.22	31	.38	10	.44	11
08210014	7,500	33,360	1 7/16	37	.59	15	5.13	130	1.41	36	.44	11	.59	15
08210018	10,000	44,480	1 7/8	48	.75	19	7.06	179	1.88	48	.63	16	.81	21



Rope to Swivel Clevis

Used to connect the swivel to rope up to 1" (25 mm) in diameter. **To be used only with an 808 Champion Swivel of the same size.**

Part Number	Size		Max O.D.		Load Rating	
	(in)	(mm)	(in)	(mm)	(lbs)	(N)
08091212	1 ¼	32	2	51	4,000	17,792
08091213	1 ⅜	35	2	51	6,500	28,912
08091216	1 ½	41	2	51	8,500	37,808
08091220	2	51	2	51	10,000	44,480



Rope to Rope/Grip Clevis

Versatile clevis provides efficient link for several applications. All-steel construction with 10,000 lbs. (44,480 N) load capacity. Combinations of sheaves and pins allow the following connections:

- ¾" (19 mm) diameter rope to ¾" (19 mm) diameter rope
- Rope to forged eye pulling grip
- Forged eye pulling grip to forged eye pulling grip
- Rope to flexible eye pulling grip

Part Number	Max O.D.
	(in) (mm)
08091200	1 ¾ 44



Swivel Compatibility Chart

Swivel Part Number	Size in (mm)	Pulling Eye Size Range		Eye to Eye Connectors Size	Pulling Harnesses	
		Standard Head Reusable Power Pulling Eyes Cable Size	Fixed Head Innerduct Pulling Eyes Duct I.D. in (mm)		Separate Leg Ends	Large Front Link
08017000	5/8 (16)	---	---	---	1/8, 1/4	---
08016000	7/8 (22)	1/0-4/0 AWG	---	---	1/8, 1/4	---
08080912	1 1/4 (32)	All	---	3/8, 1/2	All	1/8, 3 x 1/4, 2 x 1/2, Chain
08080913	1 3/8 (35)	All	---	3/8	All	1/8, 2 x 1/2, Chain
08080916	1 5/8 (41)	250-2,500 kcmil	---	3/8, 1/2	All	1/8, 2 x 1/2, Chain
08080920	2 (51)	250-2,500 kcmil	---	All	All	1/8, 1/4, 3 x 3/8, 2 x 1/2, Chain
08080925	2 1/2 (64)	---	---	1/2, 5/8	All Cable	All
08080930	3 (76)	---	---	1/2, 5/8	All Cable	All
08210007	7/8 (22)	---	1.210 - 2.030 (31-52)	---	1/8, 1/4	---
08210012	1 1/4 (32)	All	---	3/8, 1/2	All	1/8, 3 x 1/4, 2 x 1/2, Chain
08210014	1 7/16 (37)	All	---	3/8, 1/2	All	1/8, 3 x 1/4, 2 x 1/2, Chain
08210018	1 7/8 (48)	250-2,500 kcmil	---	All	All	1/8, 1/4, 3/8, 2 x 1/2, Chain



Break-Away Swivels



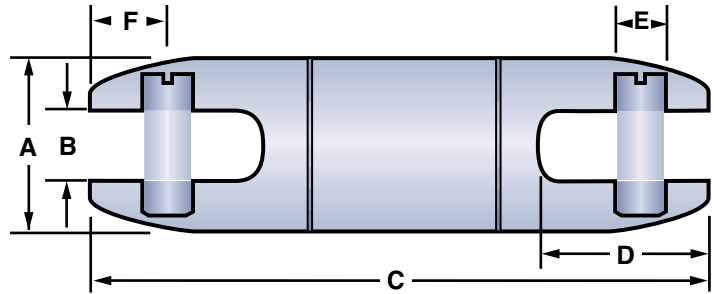
SWIVELS & ACCESSORIES



U. S. Patent No. 4,687,365.

Break-Away Swivel

Essential for fiber optic and coaxial cable pulling, these swivels have a break load ranging from 150–1,800 pounds (667–8,006 N) and are designed to separate at $\pm 10\%$ of their rated break load. If the load rating is exceeded, the interior break pin fractures, the swivel separates, and the cable remains undamaged. Break pin is easily replaceable (see ordering information, next page).



Break-Away Swivel Dimensions

	A	B	C	D	E	F					
(in) (mm)	(in) (mm)	(in) (mm)	(in) (mm)	(in) (mm)	(in) (mm)	(in) (mm)					
5/8	16	.28	7	3.56	90	.79	20	.25	6	.37	9
7/8	22	.38	10	4.51	115	1.06	27	.31	8	.53	13

5/8" Swivel (16 mm)

Part Number	Break Load	
	(lbs)	(N)
08017300	200	890
08017400	250	1,112
08017800	300	1,334
08016900	450	2,002
08017200	600	2,669
08017500	650	2,891
08017900	750	3,336



7/8" Swivel (22 mm)

Part Number	Break Load	
	(lbs)	(N)
08018100	150	667
08018300	200	890
08018000	250	1,112
08017600	300	1,334
08018400	350	1,557
08075300	400	1,779
08015800	450	2,002
08076500	500	2,224
08018500	550	2,446
08015000	600	2,669
08018600	650	2,891
08076000	700	3,114
08075500	750	3,336
08018700	800	3,558
08018800	850	3,781
08076600	900	4,003
08015700	1,000	4,448
08018900	1,100	4,893
08015200	1,200	5,338
08019100	1,300	5,782
08074600	1,400	6,227
08076900	1,500	6,672
08019200	1,600	7,117
08019300	1,700	7,562
08017700	1,800	8,006

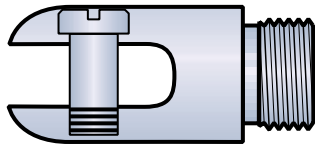
NOTE: Swivels are not designed to run around bullwheels.





Replacement Pins

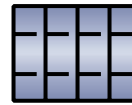
Break pins for Condux Break-Away Swivels are easy to order and ready to ship.



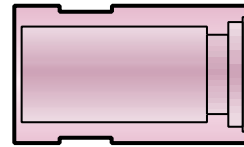
Externally Threaded Head



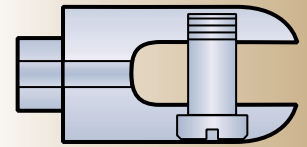
Break Pin



Bearings



Body



Internally Threaded Head

Replacement Pins for 5/8" (16 mm) Swivel

Part Number	Break Load		Color
	(lbs)	(N)	
08017305	200	890	Green/Black
08017405	250	1,112	Blue/White
08017805	300	1,334	Blue/Violet
08016905	450	2,002	Blue/Yellow
08017205	600	2,669	Orange/Black
08017505	650	2,891	Brown/White
08017905	750	3,336	Orange/Violet



Replacement Pins for 7/8" (22 mm) Swivel

Part Number	Break Load		Color
	(lbs)	(N)	
08018105	150	667	Slate/Violet
08018305	200	890	Green/Orange
08018005	250	1,112	Blue/White
08017605	300	1,334	Brown/Red
08018405	350	1,557	Black/Green
08075305	400	1,779	Blue/Black
08015805	450	2,002	Blue/Yellow
08076505	500	2,224	Orange/Red
08018505	550	2,446	Blue/Green
08015005	600	2,669	Orange/Black
08018605	650	2,891	Slate/Green
08076005	700	3,114	Orange/White
08075505	750	3,336	Orange/Violet
08018705	800	3,781	Red/Yellow
08018805	850	3,781	Black/Yellow
08076605	900	4,003	Orange/Yellow
08015705	1,000	4,448	Green/White
08018905	1,100	4,893	White/Yellow
08015205	1,200	5,338	Brown/White
08019105	1,300	5,782	Brown/Yellow
08074605	1,400	6,227	Green/Red
08076905	1,500	6,672	Green/Yellow
08019205	1,600	7,117	Black/White
08019305	1,700	7,562	Red/White
08017705	1,800	8,006	Brown/Black

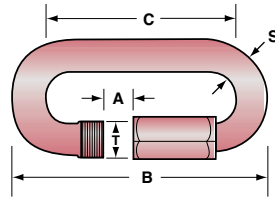




Pulling Accessories



SWIVELS & ACCESSORIES



Threaded Chain Connectors

Offer a quick and easy way to connect pulling eyes or swivels to winch lines, harnesses or rope. To close, simply screw the nut onto the threaded end. Connectors are reusable.

Note: To be used for cable stringing or pulling only.



Part Number	Work Load Limit		Stock Diameter S		Threaded Shaft T		A		B		C	
	(lbs)	(N)	(in)	(mm)	(in)	(mm)	(in)	(mm)	(in)	(mm)	(in)	(mm)
08581212	200	890	0.125	3.2	0.20	5	0.375	9.5	1.813	46.0	1.563	40
08581218	550	2,446	0.188	4.8	0.27	7	0.500	12.7	2.438	61.9	2.063	52
08581225	770	3,425	0.250	6.4	0.35	9	0.563	14.3	2.750	69.9	2.313	59
08581231	1,430	6,361	0.313	7.9	0.43	11	0.688	17.5	3.438	87.3	2.813	71
08581237	1,760	7,828	0.375	9.5	0.47	12	0.750	19.1	3.750	95.3	3.000	76
08581250	2,755	12,254	0.500	12.7	0.60	15	0.938	23.8	4.875	123.8	3.938	100
08581256	4,410	19,616	0.563	14.3	0.67	17	1.063	27.0	5.563	141.3	4.500	114
08581262	5,510	24,508	0.625	15.9	0.74	19	1.125	28.6	6.313	160.3	5.063	129
08581268	6,615	29,424	0.688	17.5	0.86	22	1.250	31.8	6.938	176.2	5.500	140
08581278	7,935	35,295	0.781	19.8	0.93	24	1.375	34.9	7.813	198.4	6.250	159

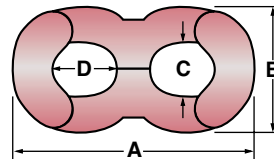
Threaded Chain Connector Compatibility Chart

Chain Connector Part Number	Size in (mm)	Pulling Eye Size Range		Eye to Eye Connectors Size	Pulling Harnesses	
		Standard Head Reusable Power Pulling Eyes Cable Size	Fixed Head Innerduct Pulling Eyes Duct I.D. in (mm)		Separate Leg Ends	Large Front Link
08581212	1/8 (3)	1/0-4/0 AWG		---	1/8, 1/4	---
08581218	3/16 (5)	1/0-4/0 AWG, 700, 750 kcmil		All	1/8, 1/4, 3/8	1/8
08581225	1/4 (6)	1/0-4/0 AWG, 350, 700, 750 kcmil		All	1/8, 1/4, 3/8	1/8
08581231	5/16 (8)	All	All	All	All Cable	1/8, 3 x 1/4, 2 x 1/2, Chain
08581237	3/8 (10)	All	All	All	All Cable	1/8, 1/4, 3 & 4 x 3/8, 2 x 1/2, Chain
08581250	1/2 (13)	250-2,500 kcmil	---	All	All	All
08581256	9/16 (14)	350, 500, 1,000-2,500 kcmil	---	All	All	All
08581262	5/8 (16)	350, 500, 1,000-2,500 kcmil	---	All	All	All
08581268	11/16 (17)	1,000-2,500 kcmil	---	All	All	All
08581278	7/8 (22)	1,000-2,500 kcmil	---	All	All	All



Figure 8 Swing Link

For quick connections to winch line or pulling harnesses.



Note: To be used for cable stringing or pulling only.

Part Number	Size (in) (mm)	Working Load		A Length		B Width		C Eye ID		D Eye ID	
		(lbs)	(N)	(in)	(mm)	(in)	(mm)	(in)	(mm)	(in)	(mm)
08580825	1/4 6	540	2,402	1.94	49	.94	24	.38	10	.50	13
08580837	3/8 10	900	4,003	2.90	74	1.31	33	.50	13	.63	16
08580850	1/2 13	1,620	7,206	3.25	83	1.63	41	.69	18	.75	19
08580875	3/4 19	3,600	16,013	5.00	127	2.50	64	.94	24	1.13	29
08580899	1 25	8,100	36,029	6.50	165	3.25	83	1.25	32	1.50	38

Swing Link Compatibility Chart

Swing Link Part Number	Size in (mm)	Pulling Eye Size Range		Eye to Eye Connectors Size	Pulling Harnesses	
		Standard Head Reusable Power Pulling Eyes Cable Size	Fixed Head Innerduct Pulling Eyes Duct I.D. in (mm)		Separate Leg Ends	Large Front Link
08580825	1/4 (6)	---		---	1/8, 1/4	---
08580837	3/8 (10)	500, 700, 750 kcmil		3/8	1/8, 1/4, 3/8, Chain	---
08580850	1/2 (13)	350, 500, 1,000-2,500 kcmil		3/8, 1/2	All Cable	2 x 1/2
08580875	3/4 (19)	1,000-2,500 kcmil		All	All Cable	1/8, 1/4, 3/8, 2 x 1/2, Chain
08580899	1 (25)	---		1/2, 5/8	All Cable	All

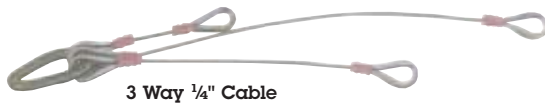


Multiple Pulling Harness

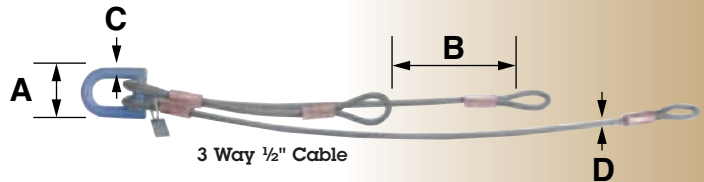
Allows staggered attachment to cable or innerduct when pulling through conduit systems or during directional drilling pull-back operations. Choice of steel cable or chains (varies by model). **Other harness combinations available upon request. Contact factory for details.**

Part Number	Description	Working Load Per Leg		Working Load Combined		Max. Width A		Separation Between Legs B		Lead Ring Dia. C		Leg Dia. D	
		(lbs)	(N)	(lbs)	(N)	(in)	(mm)	(in)	(mm)	(in)	(mm)	(in)	(mm)
08549200	3 Way 3/8" (3 mm) Cable	550	2,446	1,600	7,117	2.25	57	14	356	.37	10	.12	3
08549230	3 Way 1/4" (6 mm) Cable	1,400	6,228	2,900	12,899	3.00	76	14	356	.50	13	.25	6
08549325	4 Way 1/4" (6 mm) Cable	1,400	6,228	4,200	18,682	3.75	95	14	356	.62	16	.25	6
08569910	5 Way 1/4" (6 mm) Cable	1,400	6,228	4,200	18,682	3.75	95	14	356	.62	16	.25	6
08549326	6 Way 1/4" (6 mm) Cable	1,400	6,228	4,200	18,683	3.75	95	14	356	.63	16	.25	6
08549333	3 Way 3/8" (10 mm) Cable	4,800	21,350	9,000	40,032	2.63	67	10	254	.62	16	.38	10
08549329	4 Way 3/8" (10 mm) Cable	4,800	21,350	9,000	40,032	2.63	67	10	254	.62	16	.38	10
08549330	10 Way 3/8" (10 mm) Cable	4,800	21,351	6,000	26,689	4.50	114	6	152	.75	19	.38	10
08549334	12 Way 3/8" (10 mm) Cable	4,800	21,351	6,000	26,689	4.50	114	6	152	.75	19	.38	10
08549342	16 Way 3/8" (10 mm) Cable	4,800	21,351	6,000	26,689	4.50	114	6	152	.75	19	.38	10
08549331	2 Way 1/2" (13 mm) Cable	7,000	31,136	10,000	44,480	2.50	64	12	305	.50	13	.50	13
08549332	3 Way 1/2" (13 mm) Cable	7,000	31,136	15,000	66,720	3.75	95	12	305	.87	22	.50	13
08549340	4 Way 1/2" (13 mm) Cable	7,000	31,136	15,000	66,720	3.75	95	12	305	.87	22	.50	13

NOTE: 10 & 12 Way 3/8" (10 mm) harnesses only have a single stagger. All other harnesses are sequentially staggered.



3 Way 1/4" Cable



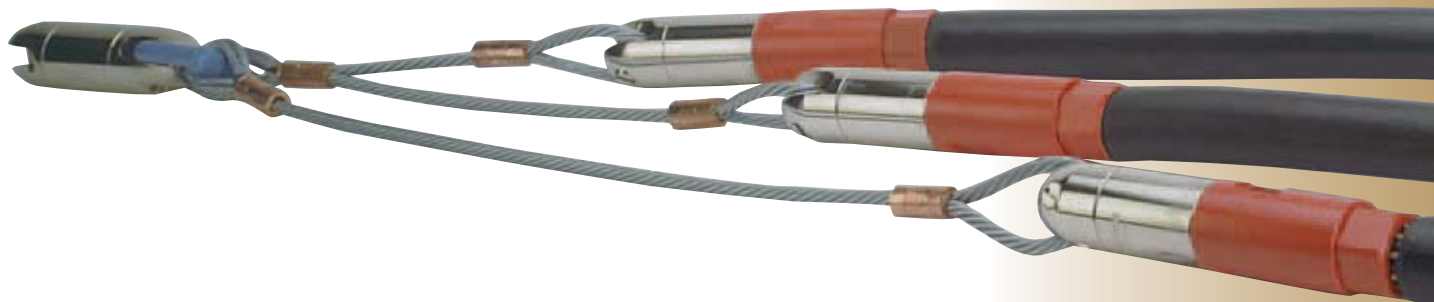
3 Way 1/2" Cable



3 Way Chain



10 Way 3/8" Cable



Eye to Eye Connectors

Light duty winch line pulling connector drop forged from C-1035 steel. Hot dip galvanized.

Part Number	Size		Working Load	
	(in)	(mm)	(lbs)	(N)
08050300	3/8	10	2,200	9,786
08050500	1/2	13	3,600	16,013
08050501	5/8	16	5,200	23,130

NOTE: To be used for cable stringing or pulling only.

